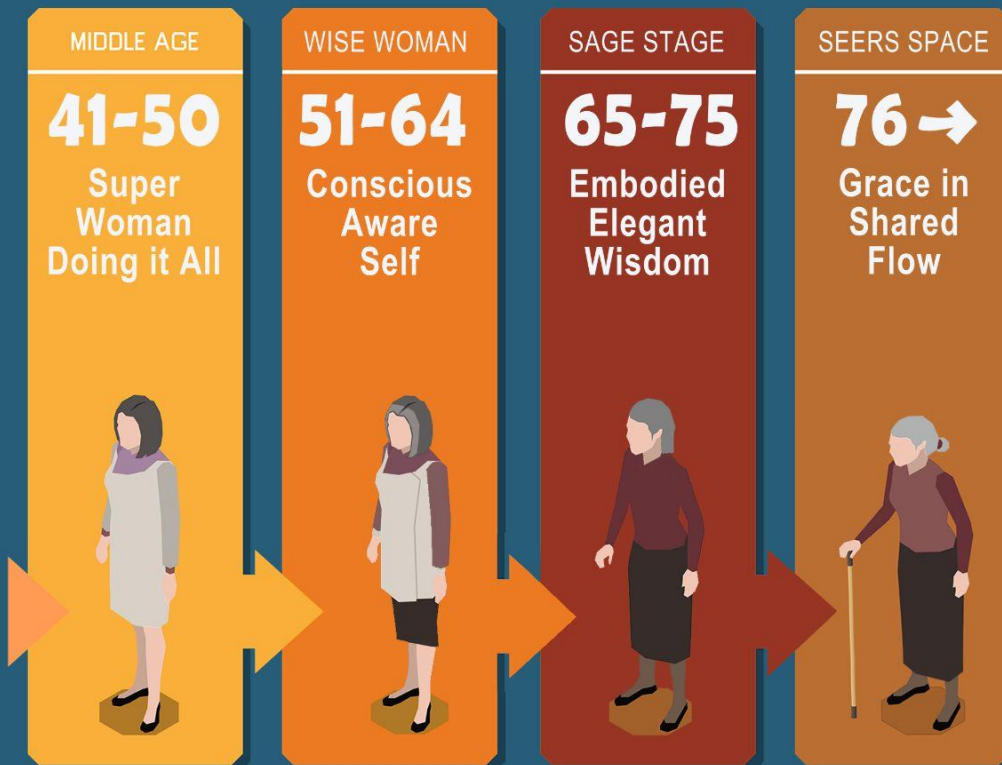
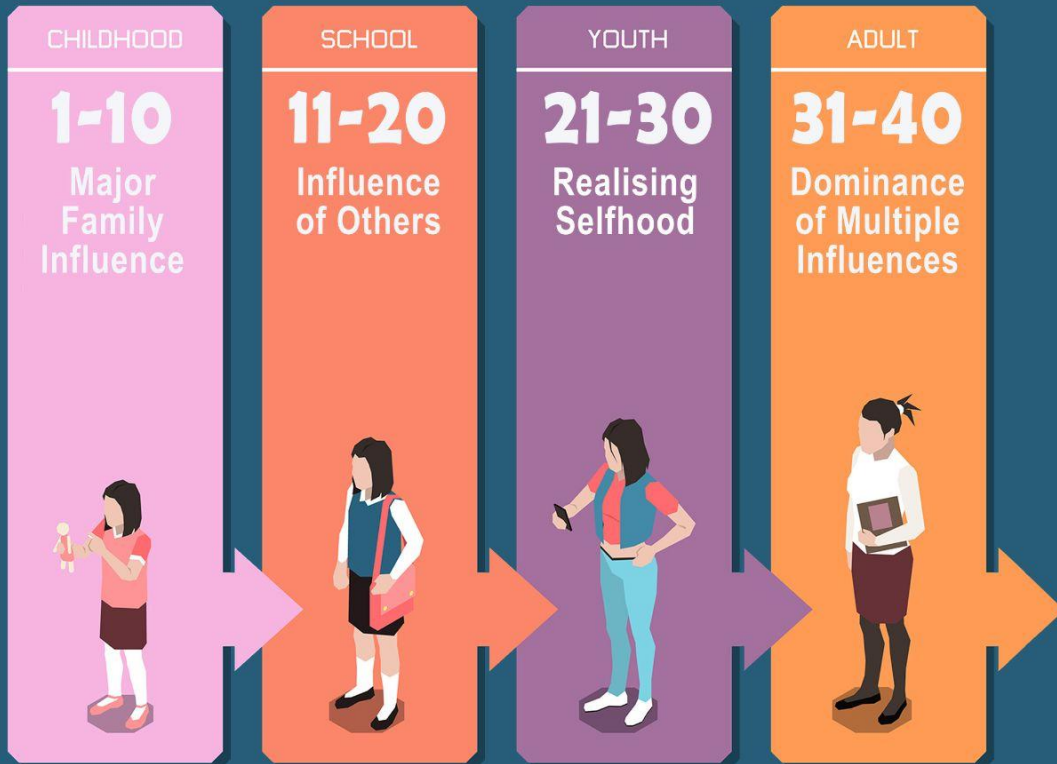


Heart-Scoping



HeartScoping

HeartScoping is all about revisiting your life through the most resonant events for you. Drilling into the lessons you learned from each event at that time and now from the long-vision point of view.

Across every decade of your life, the lessons come in a variety of forms:

- Friends
- Children
- Passions
- Forgotten loves
- Mistrusted passions
- Pathways not taken
- Misdirected steps
- Facing and placing energy to your passions
- A walk on the wild side or safe side

***Explore your Heart in Deeper Ways with an intro
45 minute Session \$97***

Luminous Transitions - Wise Woman

This time is about you becoming consciously self aware. Being in sync with your heart is hard to realise whilst in superwoman mode juggling life, work, family and commitments.

This transition around the 40s to 50s is often overtaken by menopause which makes it difficult to consciously appreciate that you are beginning another longer passage of life that will continue for a while.

As you transition to this stage in your life, some ladies feel heated inside (fiery, angry and hot!) and incandescent in these years. This is the time you begin to identify your Wise Woman Ways. That whisper you hear is your unique, bespoke wisdom coming from your heart. This is your Wise Woman Way - your own inner glow becomes luminous to others.

***Ask me about your next steps in exploring your unique Wise Woman
Ways!***

Embodied Elegant Wisdom - Sage Stage

The next passage begins and it is all alchemic fire and heart-reach that unifies soul, body, spirit and mind. When you ultimately discover meaning from each life lesson for your maturing soul-stream and these heart-rich learnings take you into the Sage Stage. This is when your joys, hardships, family, friends, life challenges, hurdles, talents and successes all transmute into your crown of wisdom.

This is true woman's alchemy, as you emerge from menopause and learn to navigate the Sage Stage entering the time of your elder-hood feminine power. A new adventure begins as you become a beacon of light, luminescent and clear, dancing on your own initiated path.

***Claim your inner soul wisdom and all your heart vistas
to fully explore your unique Wise Woman Ways!***

Enquire Now!

Email: nikki@nikkiacreber.vip